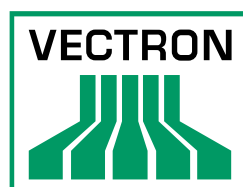




Retail

Speedy POS Solutions to make ezi-profits

POS | Back Office | Mobile | Kiosk | CCTV | Time & Attendance | Digital Signage





Vectron Systems

Need to speed things up in your business?

Vectron System proudly presents Shop-Ezi, a market leading Point of Sale solution that offers retail focused functionality combined with unique features including systems for back office, point of sale, order and inventory control, shop floor scanning and CCTV.

No matter the size of your grocery or supermarket store, Shop-Ezi will bring in many business benefits.

Easy and rewarding to use the software directs the cashier quickly and accurately through the transaction. Staff productivity is improved and results in better customer service with fewer queues and less training.

Available as a fully integrated system or software only package for installation on existing front end hardware.





Vectron | Shop-Ezi Pos

POS - Functionality meets efficiency.

Comprehensive in its content, stylish in its appearance and above all else, easy to understand and use, this POS module excels in providing everything the front end system needs. Register operators are comfortable using it, managers and owners confident in a robust solution.

The POS system easily interfaces with the self checkout, payment stations and the integrated card recharge systems.

Features

- User definable parameter settings to make the system highly configurable and 'future proof'
- Customer account lookup with floating balances, credit limits and charge posting system
- Customer account payable through the pos terminal
- Customer charge account facility
- Integrated loyalty points function
- Docket marketing facility – 15 lines at header and trailer
- Integrated EFTPOS/XPOS; internet EFTPOS available with most banks
- Store logo display - static or animated
- Pick-ups, payouts and loans available on lane
- Customer accounts can use photo id



Vectron | Shop-Ezi Pos

The key factors that contribute to the success of our retail systems:

Simplicity

- Comprehensive image 'flip charts' facility for easy product identification on F/V
- Bright finger profile touch buttons reduce miskeying
- 'Lead through' prompts speed up transaction processing
- Hi-spec touch screen with 'light touch' activation
- In-store promotional advertising on customer display: weekly promotions, carryout service, etc
- Internal peripheral drivers (printers, scales, scanners, cash drawers etc) for simple installation and set up
- Easy 'suspend transaction' with resume from any terminal by scanning barcode or keying transaction number

Efficiency

- All sales data is recorded for search and review when needed
- Sales data is processed immediately by back office – up to the minute reporting
- Each lane is individually and transparently updated by back office data changes
- Continuous front-end operation and unassisted recovery in the event of back office system failure
- Cashier read at each lane
- Optimum specification computers
- Fast and durable thermal printers
- Enhanced scanner/scale combinations
- Training mode option

Security

- Lane monitoring via CCTV surveillance, including multiple lanes simultaneously
- Simple messaging function from POS to back office
- Audit security via supervisor tags
- Financial reporting option at POS
- Menu options with 3 (user definable) security settings
- Floating account balances to ensure store charge credit limit accuracy
- Item correction and past item voids with programmable limits and manager authorization



Vectron | Shop-Ezi Office

Communicate throughout your store.

Vectron brings to you one of the most comprehensive feature packed back office systems available today. A product evolved out of continuous listening to the needs of retailers, we can truly say this solution is designed for retailers by retailers.

As a result, the back office has emerged so full of useful features designed to suit your retail needs today, yet so flexible it will have no problem accommodating the needs of your business in the future.

Timely accurate information is readily available in a variety of on-screen and printed reports, with reliable fully integrated links to all the modules in the Shop-Ezi range plus all your peripheral equipment e.g. scanners, scales and printers.

Features

- Flexible data interface
- Suitable for small, medium and large stores
- Single store single user or multi store multi user
- Universal host interface
- Powerful product search using partial data e.g. product code, group, size or name
- Auto host change facility
- Extensive product file maintenance capability
- Fully interfaced with our digital surveillance and security module
- Tab based screen display for quick, easy navigation of product data
- Flexible reporting using multiple filtering options
- Comprehensive stocktake module
- Supports interface with Electronic Shelf Labels (ESL)



Vectron | Shop-Ezi Office

Auto-order

The order module provides the user with a finely tuned automatic ordering process that eliminates the need to set minimum and maximum stock levels for each item. Auto-ordering includes inventory control to provide retailers with one of their key tools to help reduce cash tied up in stock, whilst freeing space to optimise sales opportunities.

Promo management

Manage promotions quickly and effectively and taking maximum advantage of the promotion buy period is a key element of retail operations. Create your own in store promotion material and select the type of offer whether it's weekly, fortnightly, monthly and set the new in-store promotion sell price based on the normal \$ margin using the hosted promotion cost.

Scalecom

This module provides a communications link between the back office and scales, wrappers and printers used in fresh departments, any device that needs to be updated with price changes, product additions and deletions.

Shelf labels

Electronic shelf labels offer retailers tangible labour savings by quickly and accurately updating pricing at the shelf electronically, therefore helping them focus on the needs of their customers and providing an advantage against the competition.





Vectron | Shop-Ezi Mobile

Take control of your time!

Manage your time better by walking the shop floor and communicating directly to your back office system; check current prices, verify present/future/past promotion prices, activate/de-activate items, order shelf labels or talkers, and set up in store specials.

Price Verify

- Create in store specials and change normal pricing from the shop floor
- Adjust margin/sell overrides
- Review current promotional pricing and compare to standard
- Check specials – past, present and future
- Show sales history
- Activate items

Orders

- Check critical order information 'at the shelf' and make optimum order decisions
- Automatic display of forthcoming promotions on the 'order input' screen
- Check the previous order quantity along with AWS
- Review current undelivered orders to see carton quantities and cost extensions
- Use the 'negative order' function to ensure you are not overstocked

Stocktake

- Eliminate the need to return the PDE to the back office to process shop floor data
- Quick simple process: scan – enter count – send
- Recall & review (make changes/delete entry etc) items counted at any time
- Increase your stocktake efficiency by keeping the PDE's on the shop floor
- Discrepancy report allows stock take count to be reconciled against back office figures

Location maintenance

- View location and facing information whilst 'at the shelf' and update as required
- Adjust the default shelf label or talker quantities for each location
- Set the small labels flag for each location
- Automatic mode minimizes the time needed to set up office location system in-store





Vectron | Shop-Ezi Mobile

Manage your shrinkage without guesswork

Marking down short dated and damaged products doesn't mean you have to take a stab in the dark to try and minimise your loss; the markdown feature gives you complete control over the whole process.

Fully integrated with the mobile system, the clip on belt printer moves around the store with the operator as selected items are marked down, once you have set the markdown price by \$ value or % the label is printed and applied immediately to the item you want to clear. The barcode contains the current sell and the markdown price so the single scan process provides all the data needed to ensure accurate profit/loss reporting, either detailed or summarised.

- Increase impulse sales by highlighting reduced to clear products
- Price embedded bar code removes errors at the checkout
- High tack labels with security cuts prevent price swapping
- Provides extended sales history when reviewing data prior to deciding markdown amount
- Improves scanning efficiency (single scan only required)
- Displays the date the item was reduced
- Potential profit increase on markdown goods
- Barcode section of the label is perforated to allow the reduced price section to always appear on the top/side panel of the product





Customer Order Status Screen

Order #	Time	Item	Qty	Status	Order #	Time
10	8:30am	1	1	Packing	10	8:30am
11	8:30am	2	0	Ready	11	8:30am
12	8:30am	1	1	Packing	12	8:30am
13	8:30am	2	0	Ready	13	8:30am
14	8:30am	1	0	Ready	14	8:30am
15	8:30am	1	0	Ready	15	8:30am
16	8:30am	1	1	Packing	16	8:30am
17	8:30am	2	1	Packing	17	8:30am
18	8:30am	1	1	Waiting	18	8:30am
19	8:30am	1	1	Waiting	19	8:30am
20	8:30am	1	1	Waiting	20	8:30am
21	8:30am	1	1	Waiting	21	8:30am
22	8:30am	1	1	Waiting	22	8:30am
23	8:30am	1	1	Waiting	23	8:30am
24	8:30am	1	1	Waiting	24	8:30am
25	8:30am	1	1	Waiting	25	8:30am
26	8:30am	1	1	Waiting	26	8:30am
27	8:30am	1	1	Waiting	27	8:30am
28	8:30am	1	1	Waiting	28	8:30am
29	8:30am	1	1	Waiting	29	8:30am
30	8:30am	1	1	Waiting	30	8:30am

Vectron | Shop-Ezi Kiosk

No more queues!

Allow your customer to place an order for goods at a self serve touch screen kiosk, rather than queuing in line at a counter. Linked to the existing back office data, the kiosk creates a list with the appropriate details for the shop assistant to prepare customers' orders.

Totally automated and easy to use the self serve touch screen requires no management.

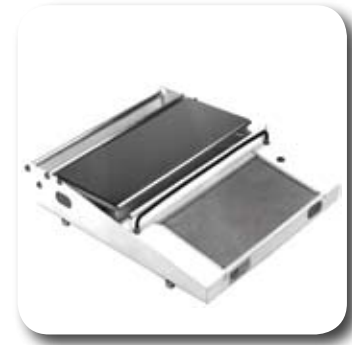
Benefits

- Saves customers' and shop assistants' time
- Customer no longer has to wait in line
- No stress for the shop assistant
- The screen doubles as an advertising billboard when not in use
- Management reports including waiting times, peak serving times, number of walkaways etc
- Latest technology, innovative and impressive
- Totally automated including price updates
- No management required by assistant
- All orders are recorded, resulting in greater accuracy and happier customers
- Quick and easy to install
- Customers can choose to place orders for goods by dollar value, quantity, pieces or weight
- Items can be ordered as thick or thin, shaved or sliced, large/medium/small or any custom combination

Features

- Wall mounted or self standing kiosk
- 240 volt and connect to the internet
- User friendly interface
- Built-in printer for customer receipt
- Additional fully integrated take-a-ticket interface from order terminal and stand alone ticket dispenser





Vectron | Food Service Equipment

We provide a convenient one-stop source of equipment for supermarkets, groceries and delis. Through our buying power, we provide the best value, selection, and price for our customers. All products that we represent incorporate cutting-edge technology, quality, reliability, flexibility and value.

Scales

We offer a complete range of label printing and scanner scales from Avery, Magellan and NCR. These can be used as standalone or integrated with your POS equipment.

- Attractive designs, with a choice of integral or tower displays
- Powerful memory - choice of 1400PLUs or 5000PLUs
- Simple 'plug 'n play' operation, on-screen prompts and internal diagnostics
- State-of-the-art software for back office control

Slicers

Choose from a range of high quality meat slicers from established brands for unmatched quality. Designed and built for performance, safety, hygiene and reliability, our meat slicers are fully warranted and comply with safety standards.

Meat Wrappers

Choose from slim line or our more advanced vacuum packing equipment. Ideal for packing fresh meat, poultry and vegetables.

Superwrapper

- Plugs direct into any 240v power outlet
- Separate switches for hot plate and cutting
- Internally fused for full protection

Vacuum Packer

- Memory for up to 10 different programs
- Soft air - reinsertion of air prior to sealing bag
- Variable vacuum setting



Vectron | CCTV

Track your store 24/7.

Our CCTV systems are commercial grade and come with remote internet access. A network of cameras lets you keep an eye on any suspicious activity across your store. View and manage footage from home or on the road. Integrate your checkout activity with CCTV images to further track transaction issues.

We offer:

Commercial grade CCTV Digital Video Recorders - continuous high quality

digital CCTV recording and storage for days, weeks or months at a time

High Resolution Cameras - high quality images, small and unobtrusive

CCTV cameras - range of high definition monitors in various sizes

CCTV software - fully featured with complete remote operation

We are experienced in the set up of large and small CCTV systems to provide you with sophisticated monitoring of your store.

POS Integrated CCTV

Our security systems can interface with your POS system. Link real time transaction data to live video of staff and customers. Checkout data is overlaid onto actual images to provide proof of who sold what, to whom, when and at what price. Variances are easily identified with full exception reporting. Our CCTV systems can be integrated with a single pos terminal or several.

Who can benefit from CCTV?



Any store operator that needs to:

- catch or deter potential thieves
- deter staff theft
- view acts of violence
- protect customers and staff
- provide irrefutable evidence of incidents
- see how staff interact with customers
- be in many places at one time

If you are looking for a sensibly priced CCTV security system, talk to us.



Vectron | Time and attendance

Streamline your employee management process across your store.

Our advanced TIMEMachine combines fingerprint recognition technology with comprehensive time and attendance software to ensure that staff are actually at work when they claim to be. You can reduce costly manual processing errors and you pay your employees for the exact time they work.

One of the most flexible, easy to install and cost effective electronic time clocks available for stores; employee enrolment and verification takes just a few minutes. Fully featured back office software allows editing, verifying, and reporting on all clock-ins, clock-outs and work times.

How does it work?

User ID	User Name	01-09/03	02-30/03	03-09/03	04-09/03
0	Suzanna, Gabriel	08:01	18:34	07:36	18:07
1	Jean, Bouchard	08:01	18:34	07:26	18:07
1300	Tina, Pappas	09:03	19:35	N/A	N/A
2	Rajiv, Dalmat	08:01	18:34	07:06	18:08
202	Wendy, Smith	09:03	19:35	N/A	N/A
3	John, Pinball	08:02	18:34	07:06	18:08
4	Bill, Lavinther	08:02	18:34	08:06	19:08
5	Peter, Johnson	08:02	18:34	08:06	19:08
55	Peter, Walsh	09:03	19:35	N/A	N/A
6	Gordon, Fleming	08:02	18:34	08:07	N/A
8	Chris, Lee	08:02	18:34	08:07	N/A
908	Alex, Hagan	09:03	19:35	N/A	N/A
A181	John, Wu	09:03	19:35	N/A	N/A
A182	Karen, Tan	09:03	19:35	N/A	N/A

Biometric authentication technology lets you track your employees' time and attendance with the touch of a finger. This is the most accurate way to collect employee time and attendance information.

The system verifies an employee's identity based on the characteristics of their fingerprint. Reading sensor scans any fingerprint in under one second making clock in and clock out instantaneous. All employee information is encrypted and recorded on a secure memory card.

Benefits of using the TIMEMachine

- Eliminates human error - estimated to 5-8% of payroll costs
- No rounding up - average 10 minutes per day
- Prevents manual processing - approximate costing \$5,000 pa
- Manages just a few up to several hundred employees



Vectron | Digital Signage

Use the latest in digital displays to make your store look and feel ultra-modern. Spur sales by projecting brand messages on customers in the store while they are shopping. Deliver specific impulse purchase messages to the customer at the point-of-sale. Communicate in real time and get an edge over other grocery chains.

Our Digital signage solutions include:

Dynamic Digital Display Screens

Provide aisle end signage

Promote specials and branding messages

Point of Purchase Display Screens

Influence customers at point of sale

Promote impulse purchases

Electronic Shelf Labels (ESL)

Real-time wireless updating of shelf-edge information

Update prices faster, remove manual pricing errors

We can supply a range of commercial grade screens and media players for your signage project.

Complement your in-store design with screen surrounds that blend in, onscreen logos and corporate colors.

Our digital signage software provides a simple cost effective solution for managing single or multi site networks. Menus, messages, images and ad layouts can all be changed at your desktop. Combine our software with your existing screens or opt for a complete hardware and software solution.



Digital Signage for large stores and groups

Our robust networked platform offers unmatched flexibility and scalability for managing digital displays. Create, schedule and centrally control content for distribution across your store or group. Centrally monitor all your screens with our dashboard view of all screens in your network. Bullet proof security and design keeps unwanted messages out and ensures continual play.

“ We have been using Shop-Ezi in our stores for almost 2 years now and are very happy with the system. Having one platform across our 4 stores has made life easier in terms of staff training and the standardization of hardware. The after sales service and support has been excellent.

Dom DiCesare, Farmers Foodworks Supermarket Group

Why Vectron Shop-Ezi?

In the long term a good retail POS system can save you money, increase productivity and save you time that can be spent driving your business forward.

IGA and Foodworks accredited, Shop-Ezi is already in use at over 200 independent stores throughout Australia. A rigorous product development programme ensures system relevance and simplicity. Customers include many innovative award winning supermarkets, such as; Chapleys, Drakes Foodmarkets, Klores Retail Group and Victoria's Domphang Group consisting of three Foodworks stores.

Our Melbourne based maintenance centre is manned by some 20 highly-skilled engineers, technicians and industry specialists. Able to look after both hardware and software and with full remote access capabilities, the majority of problems a supermarket or grocery store may encounter can be quickly resolved.



Need more
information?

Contact us on 1300 789 366 | Visit us at www.vectron.com.au | Email sales@vectron.com.au

Melbourne | Sydney | Adelaide | Perth | Brisbane

